

# TI Pro v5.9.0 Release Notes

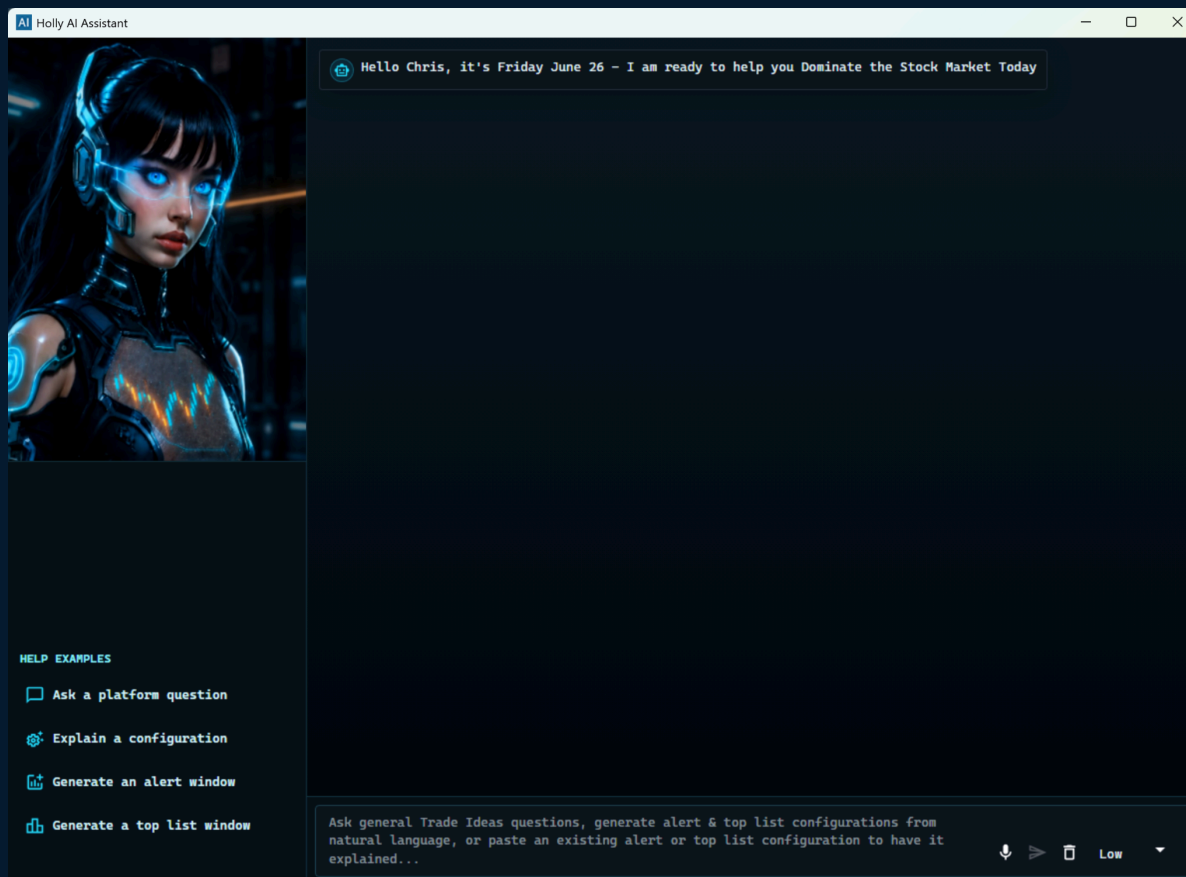
*What we've been up to on the journey of providing the best market tools in the world.*

**Changes in Version 5.9.0, since release 5.8.1:**

## 🔥 New Features 🔥

### Holly AI Assistant

- ★ *Our new AI Assistant, which can help users utilize alert and top list windows by helping them to interpret existing windows with a collaborate string, or to build a brand new scan based on a natural language description of what they're looking for.*
- ★ *Holly is also useful for learning how to use TI Pro better and can help to explain features and menu items.*
- ★ *The window can be accessed from a quick link in the main toolbar, or under the New menu.*



## 🦵 Improvements 🦵

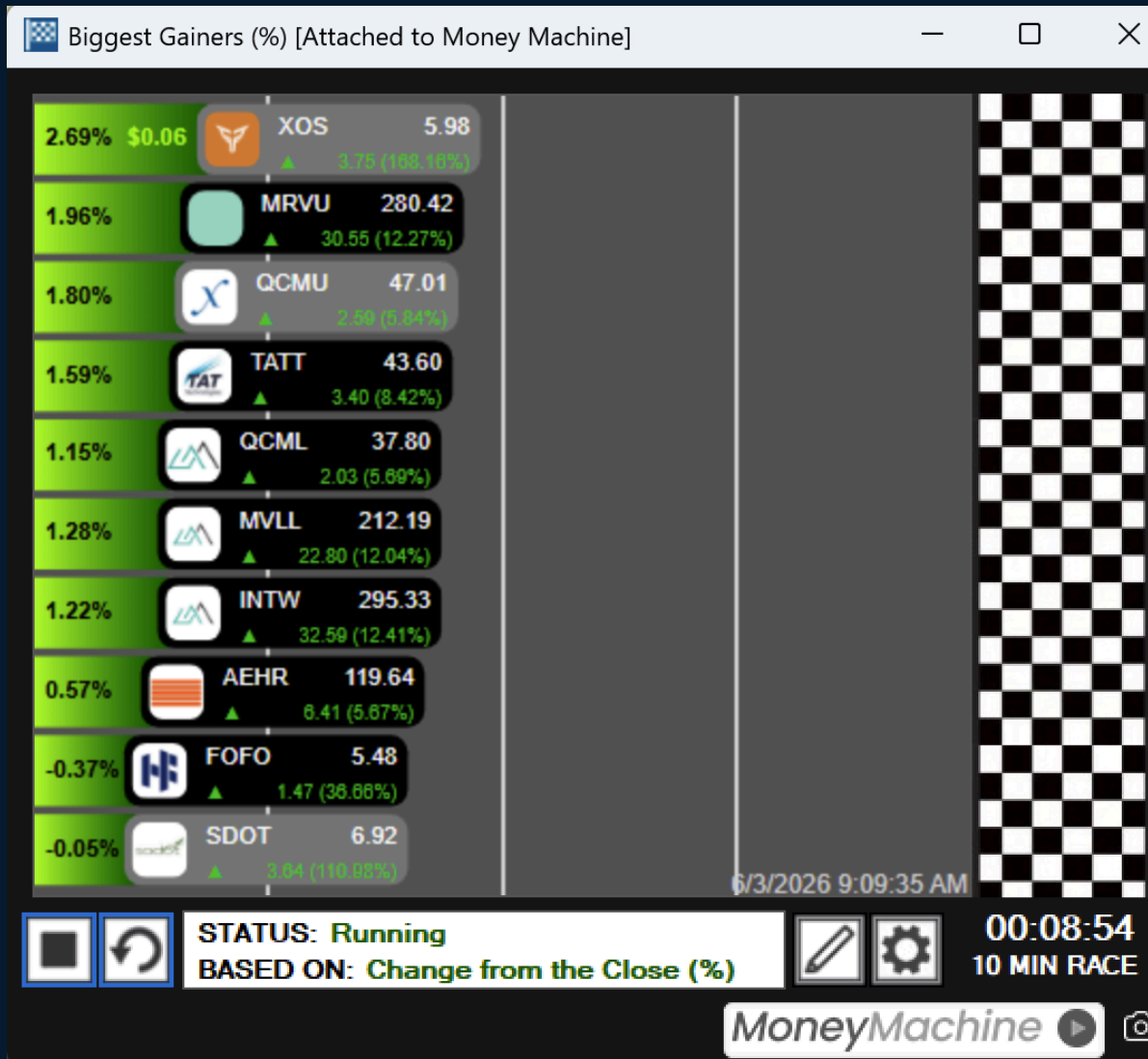
### Allow Multiple Bracket Orders on Charts

- ★ *Previously, brackets were only displayed for existing positions.*
- ★ *Brackets are now displayed for open limit orders, as well as positions, and the chart allows for displaying multiple brackets simultaneously, allowing for a richer monitoring and editing experience.*
- ★ *Open orders are displayed with a dotted outline, while positions will have a solid appearance. The user can click on any of the orders in a bracket to highlight that bracket and edit levels via drag and drop.*



## Stock Race Updates

★ Race symbols that have an open position now highlight grey.



- ★ If Brokerage Plus is not open when you click the Money Machine button on a race, it will launch it and connect to simulated trading.
- ★ If there is no Positions Grid with the Money Machine Race Default configured, it will use the first Positions Grid and load the Money Machine Default Race Profile. If there isn't a Money Machine Race Default Profile created and saved, it will create one, save it, and use it.

## Money Machine for Manual Positions

★ Users are now able to run the Money Machine on manual positions they create, rather than needing to tie it to a scan. Each of the following options must be disabled:

- Use Price Alerts for Entries
- Use Race for Entries
- Use Alerts for Entries

MM Money Machine Settings

**Profile**  Default ...  
My Manual Positions

**Active Account**  
Money Machine

**Strategy** ...  
My Manual Positions

**Filter Sort**  
Change 30 Minute (%)

**Start Time**  
08:30 AM

**Entry Cut-off Time**  
02:55 PM

**Order Entry Settings**

**Maximum Positions**  
0

**Entry Candidates**  
0

**Minimum Price**

**Maximum Price**

**Minimum Volume Today**

**Maximum Spread (Cents)**

**Position Size**  
5000

**Units**  
Dollars

**Trade Direction**  
Long

**Order Type**  
Market

**Manual Exit Re-Entry Timeout Minutes**  
15

Exit Positions on Stop

Use Price Alerts for Entries  Use Alerts for Entries

Use Race for Entries  Use Race for Exits

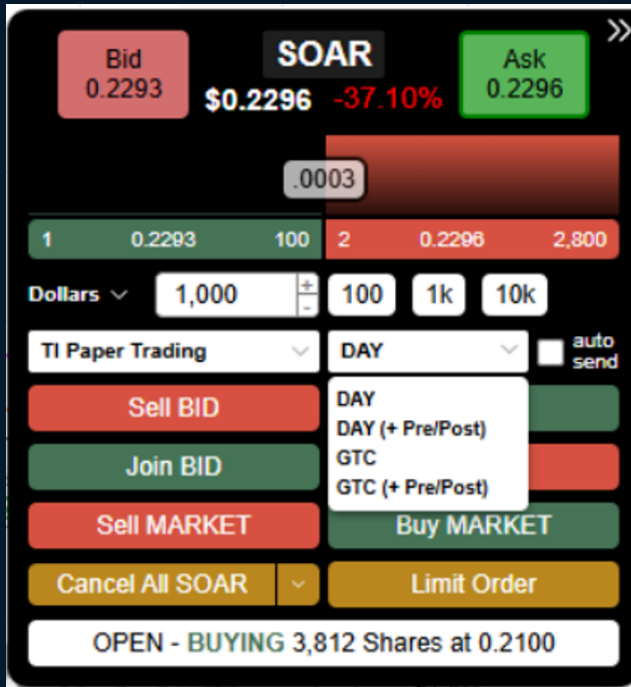
Use TI Wave  Auto Add Manual Positions

**Stops & Exit Settings**

Save Profile Save as New Profile Cancel

## New Fields in the Advanced Order Entry Panel

- ★ *TIF field allows users to set a Time in Force parameter for orders that are placed through the Advanced Order Entry Panel*



- ★ *Additional options for canceling groups of open orders.*



## Bug Fixes

- ★ *Addressed a bug that was causing multiple user issues when attempting to launch TI Pro, relating to a conflict with certain anti-virus software.*
- ★ *Addressed a discrepancy that would show between the races and chart data in certain cases.*