

# TI Pro v5.6.108 Release Notes

*What we've been up to on the journey of providing the best market tools in the world.*

Changes in Version 5.6.108, since the release 5.6.106:

## 🔥 New Features 🔥

### Alert Stream on Charts

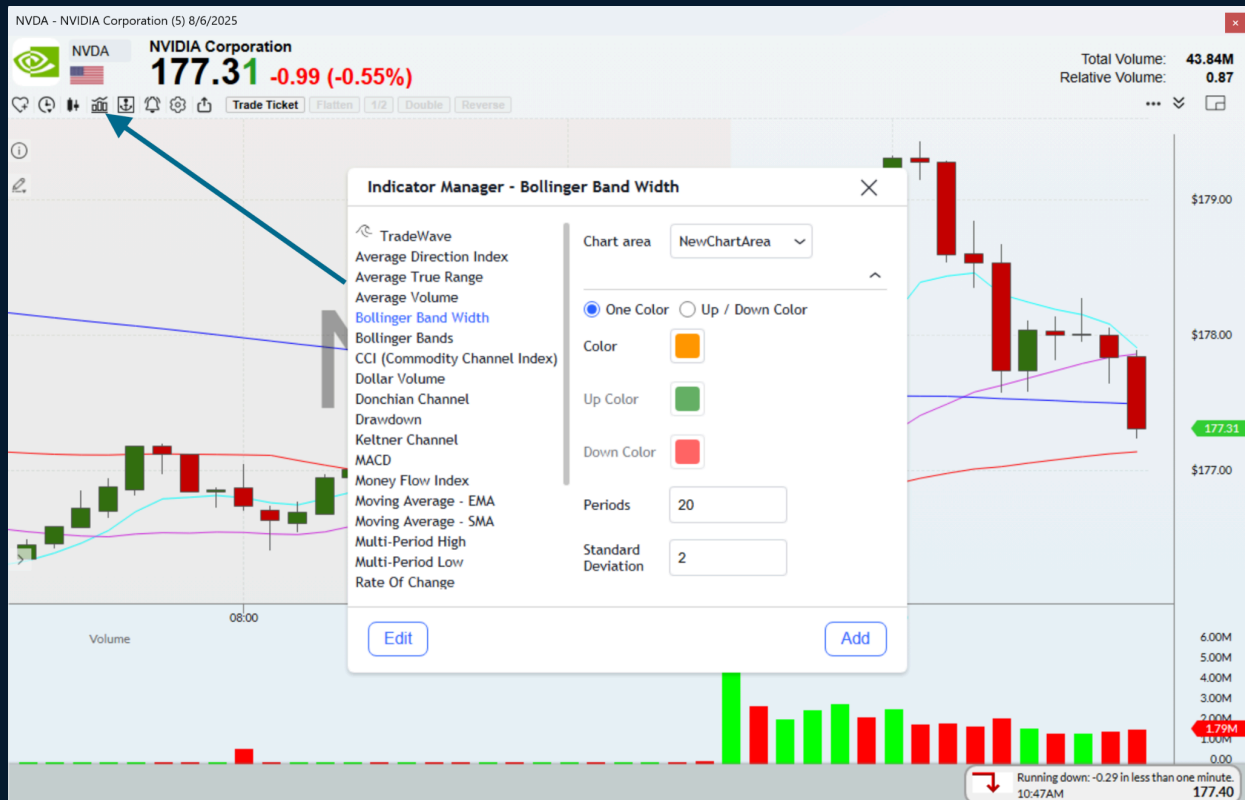
- You can now see relevant alerts for active symbols without even leaving your chart!
- This feature is enabled by default, but you do have the ability to enable and disable it.
  - Click the ellipsis in the top right corner
  - Toggle "Display Alerts on Chart"



## 💪 Improvements 💪

### Updated Indicator Manager

- The chart indicator manager has received a facelift to make it easier to use, and on the eyes!



## Long Term Strategy Trades Charting

- Our Long Term Strategy Trades window now incorporates our newer charting for a sharper and more enhanced look.
  - Go to New > Premium AI Long Term Strategy Trades to track historical AI positions as profitable swing trades!



## 🐛 Bug Fixes 🐛

- Addressed a bug that would cause accounts to be re-selected in the Brokerage Plus positions tab when they were saved as part of a layout.
- Additional handling for users with specific graphics card compatibility issues
- Addressed a bug that caused a conflict between existing position selection and the default Brokerage Plus order size in the Order Entry Panel

- *Addressed a bug that prevented Etrade users from seeing the correct P&L values when closing and relaunching TI Pro*